



Evaluating Complex Community Challenges Impacting Social Determinants of Health

Colorado Health Disparities Grant Program



Partners in Evaluation & Research



KAISER PERMANENTE[®]
INSTITUTE FOR HEALTH RESEARCH COLORADO



Partners in Evaluation & Research

Vision: Leading collaborative evaluation and research to improve the health of communities.

Evaluation Team

CHERYL KELLY

MORGAN CLENNIN

REBECCA OCHTERA

SHAYLA PERKINS

DENISE HARTSOCK



This work was funded by a grant from the Colorado Department of Public Health & Environment, Office of Health Equity

HDGP Cross-Site Evaluation

Presentation Outline



Health Disparities Grant Program
(HDGP) (5 minutes)



Cross-Site Evaluation Approach
(10 Minutes)



Next Steps & Closing Comments
(as time permits)

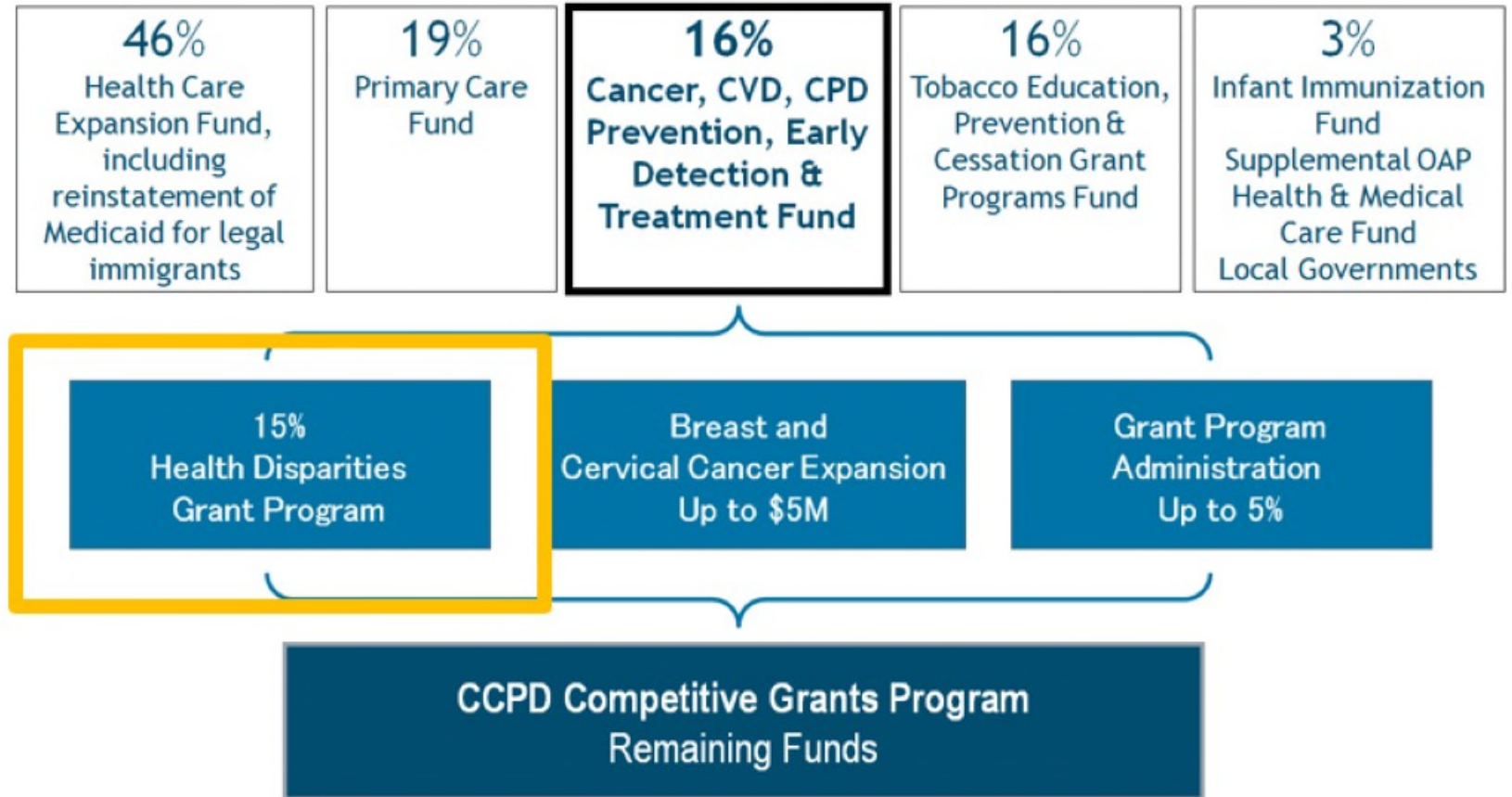
HDGP Overview (FY19-21):

CO Amendment 35

Tobacco Taxes for Health-Related Purposes
Statutory Distribution of
.64 cent tax (A35)
Revenue

2004 Passed

2018 CDPHE Office of Health Equity Shifted Funding Focus



HDGP FY19-21 Overview:

- Multi-sectoral partnerships funded to work on systems and policy changes that address upstream determinants of health.

Upstream determinants of health:

social and economic factors such as education, employment, social support, community safety, housing, transportation and environmental conditions



Health outcomes:

Cancer, cardiovascular, pulmonary disease prevention

PiER contracted to evaluation of the project; collaborating with funder.

HDGP Cross-Site Evaluation

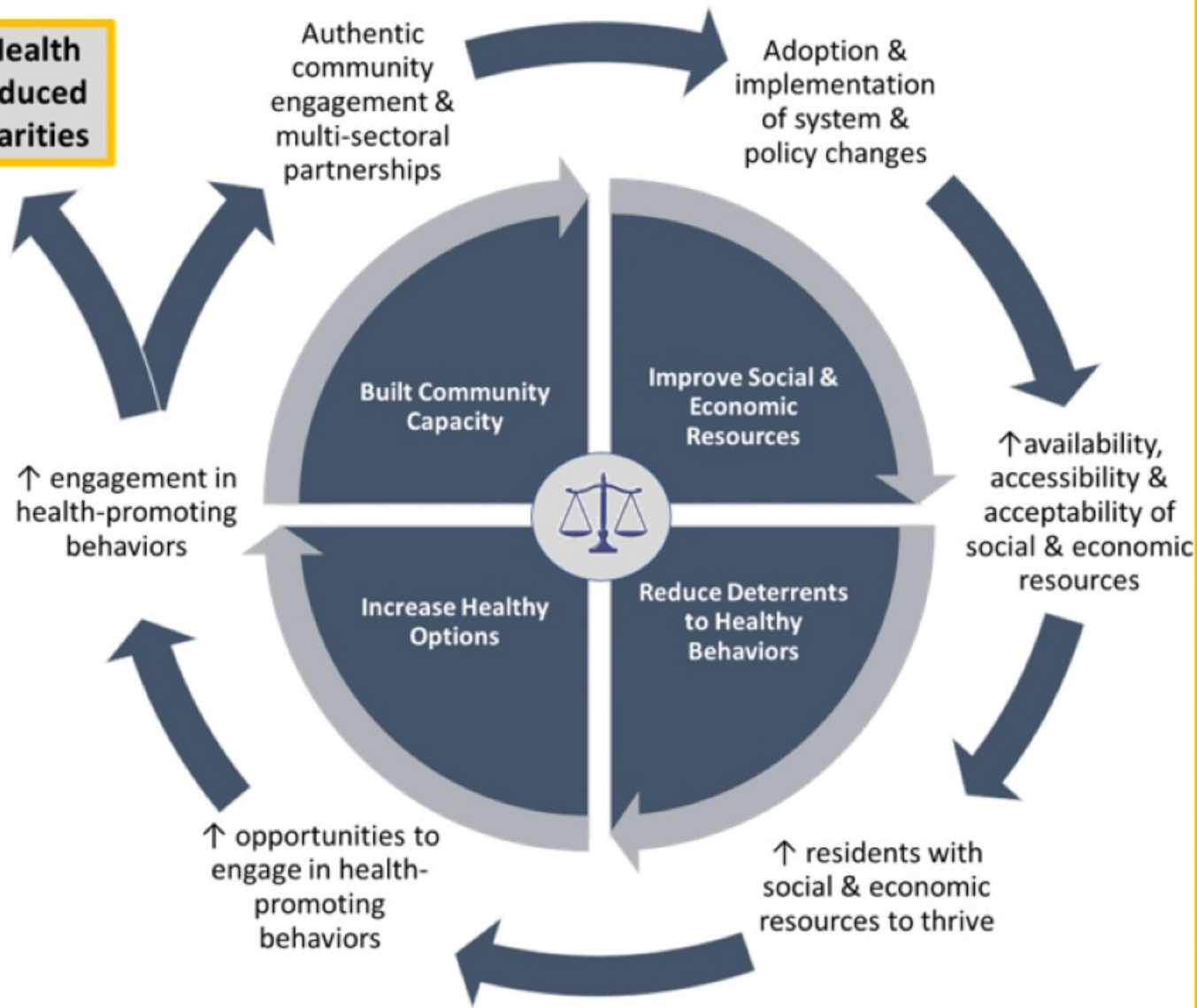
Purpose

To evaluate nine agencies funded to transform places through social, economic, political, physical changes to reduce health disparities.

To assess if the policy, system, and environmental changes increased availability, accessibility, and acceptability of social and economic resources.

9 Grantees

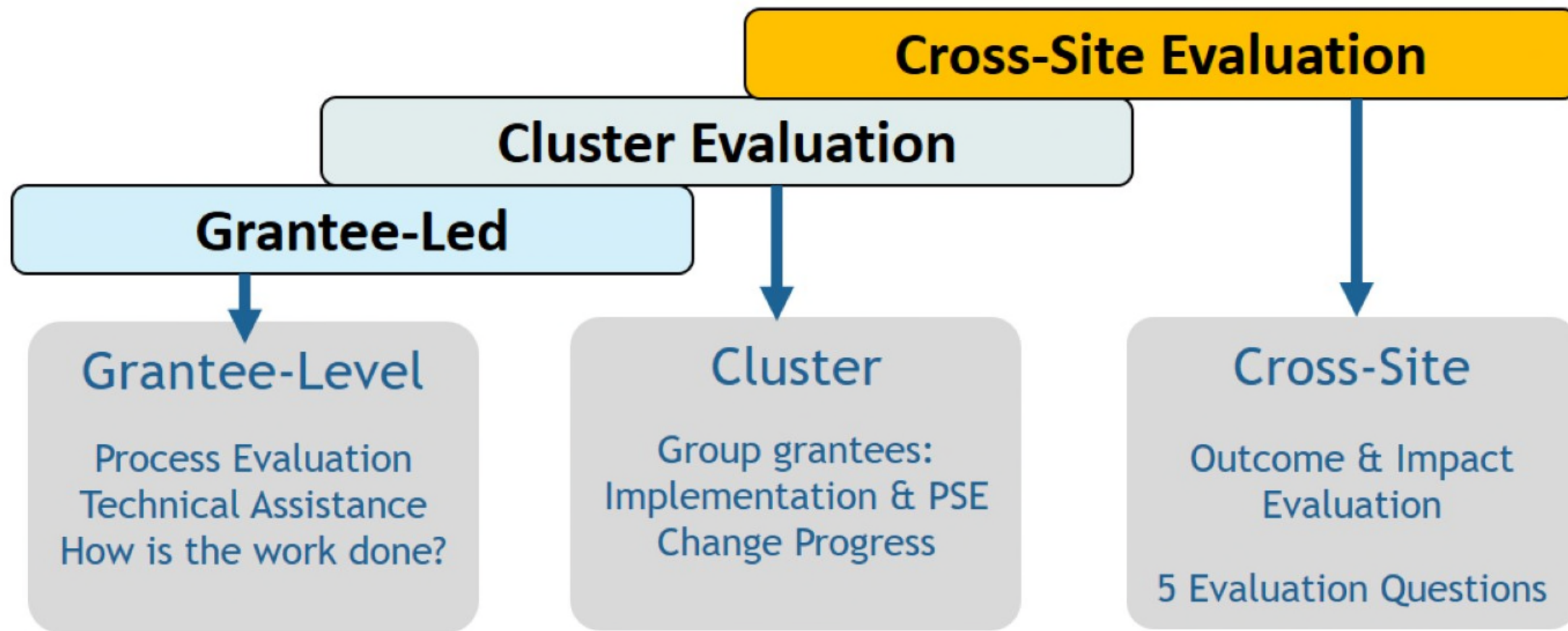
Improved Health Equity & Reduced Health Disparities



Equity-Oriented Framework Guiding the Evaluation

Framework based on Kumanyika, S. Getting to equity in obesity prevention: A new framework. Washington, DC: National Academy of Medicine; 2017.

Evaluation Components:



Cross-Site Evaluation

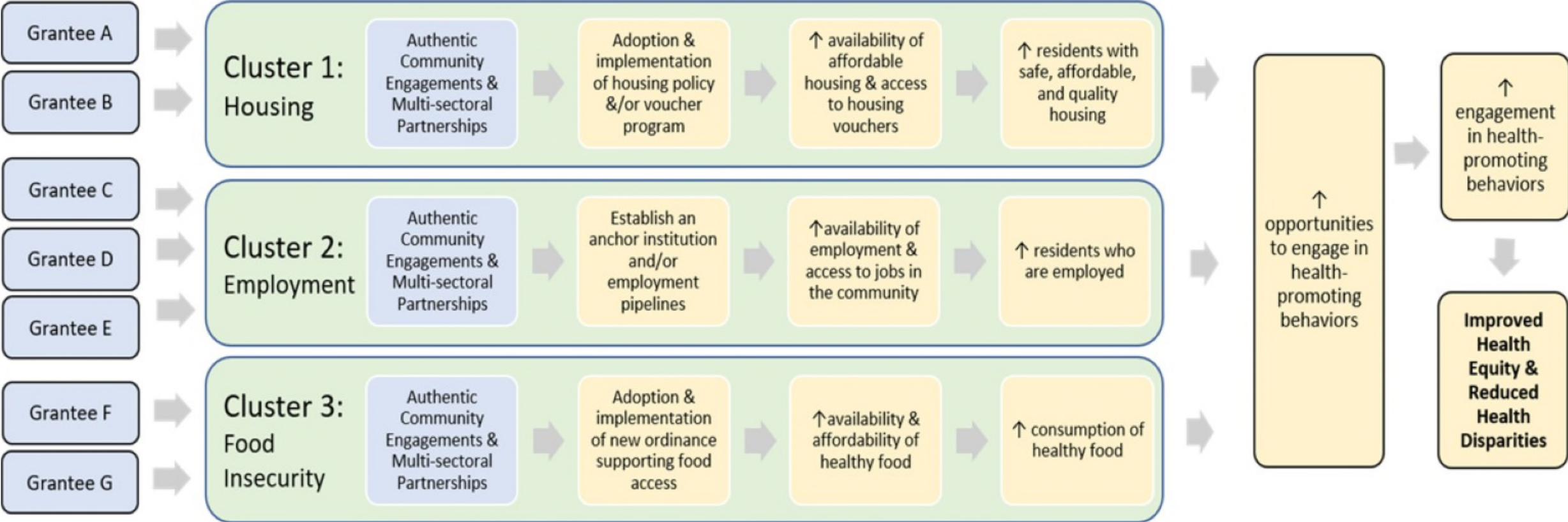
Cluster Evaluation

Grantee-Led

Process Metrics

Short-Term & Intermediate Outcomes

Long-Term Outcomes



Methods:

Data Sources, Analytic Approach, Reporting

- Core Metrics
 - Grantees report semi-annually
- Analytic Approach
 - Descriptives (Eval Qs 1-3)
 - Policy Evaluation (Eval Q 4-5)
- Strategic Learning
- Partner Mapping

Cross-Site
Evaluation
Core Metrics

Qualitative
Interviews

Policy Impact
Evaluation
(Secondary Data)

Digital
Storytelling

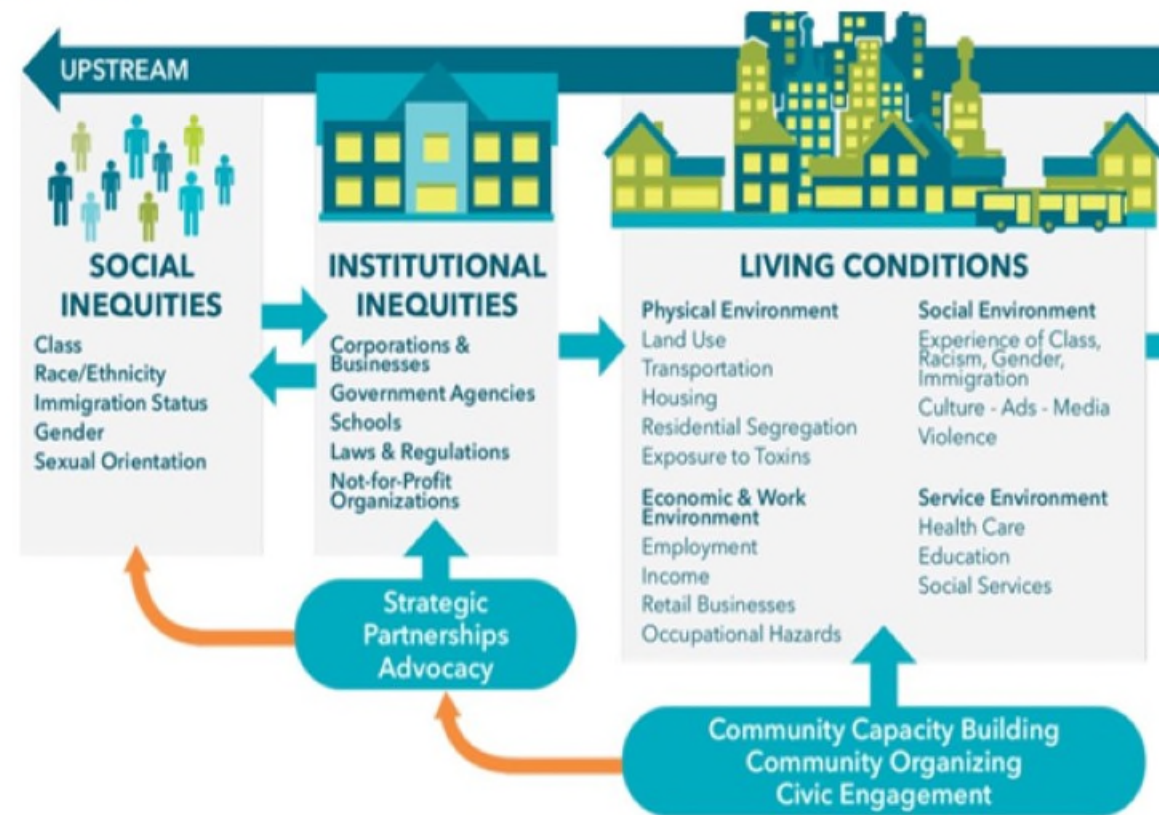
Cross-Site Evaluation

EVALUATION QUESTIONS 1-5

Evaluation Question 1: Community Engagement

1. How did community engagement advance the community's collective action to solve problems?

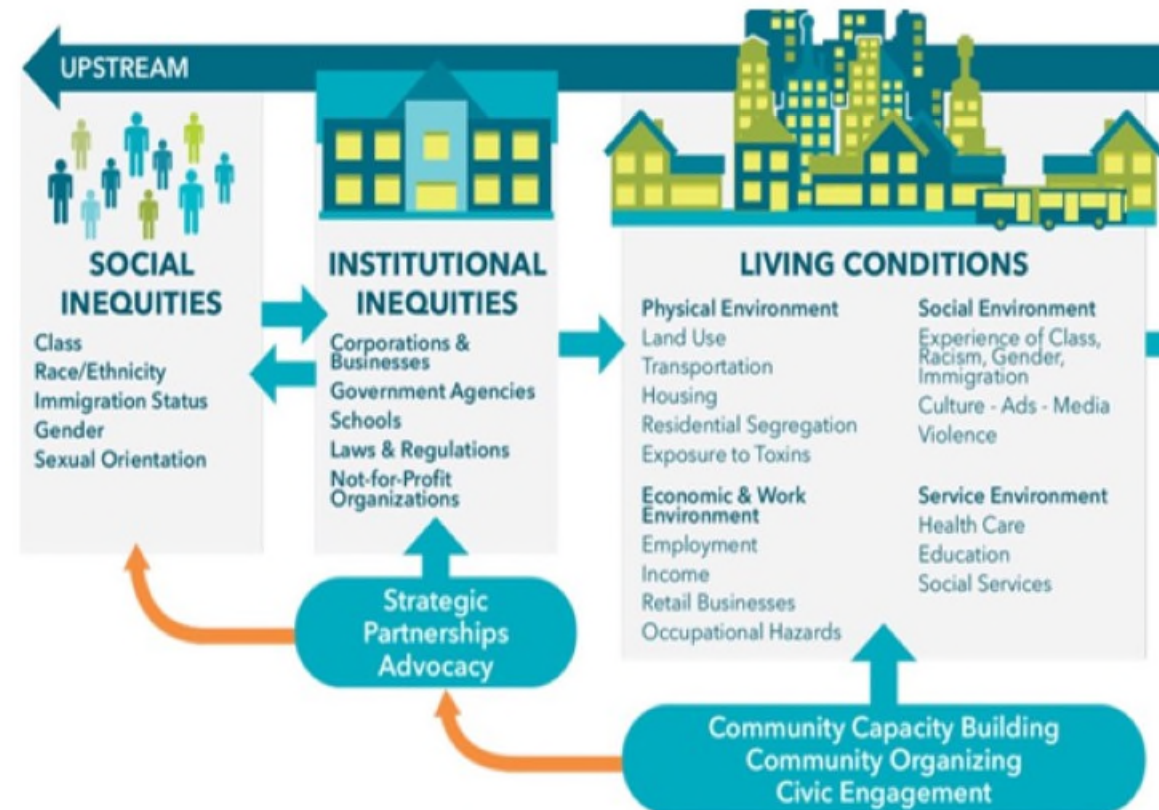
- * How did the grantee & their partners engage community members?
- * Who was engaged?
- * What was the purpose of community engagement?



Evaluation Question 2: Multi-sectoral Partners

2. How did multi-sectoral partnerships advance the community's collective action to solve problems?

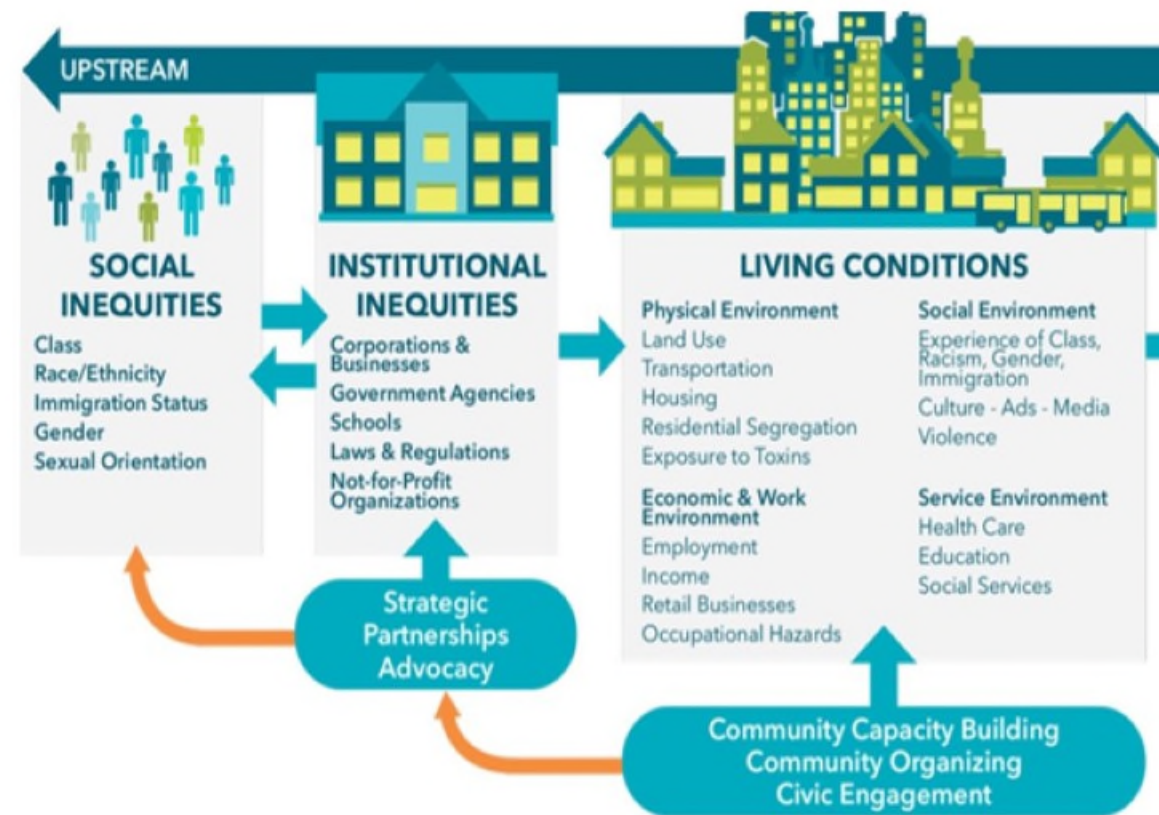
- * What was the role of partners?
- * What types of support they did provide/receive?
- * What challenges did grantees experience?



Evaluation Question 3: Capacity Building

3. How did community resident capacity advance the community's collective action to solve problems (PSE change)?

- * How did each community build resident capacity?
- * Who was trained?
- * What was the outcome of building resident capacity?

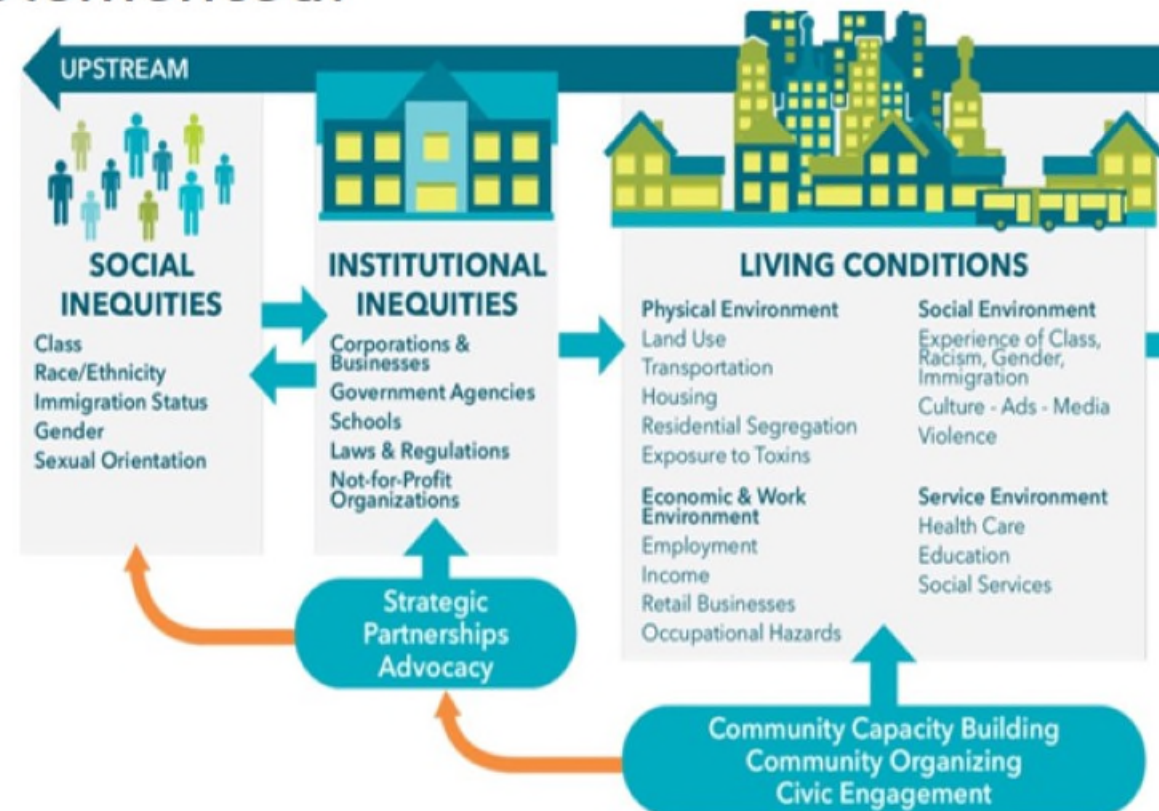


Evaluation Question 4: Policy, System & Environment Change

4. How many and what type of policy, system, or environmental changes (PSE) were adopted/implemented?

* What is the prioritized PSE change?

* Was the prioritized PSE change informed by authentic community engagement?



Evaluation Question 5: Impact on Health

5. What was the impact of policy, system, or environmental (PSE) changes on social and economic resources?

* How did the availability, accessibility, and acceptability of social and economic resource change as a result of PSE change?

* How many individuals were impacted (directly/indirectly) by PSE change?

* What was the impact of the PSE change on individual-level outcomes?



Cross-Site Evaluation Questions

Evaluation Questions:	Description	Outcome
1. How did community engagement advance the community's collective action to solve problems?	Community Engagement	
2. How did multi-sectoral partnerships advance the community's collective action to solve problems?	Multisectoral Partnerships	Short-Term
3. How did community resident capacity building advance the community's collective action to solve problems? (if applicable)	Capacity Building	
4. How many and what type of policy, system, or environmental (PSE) changes were adopted/implemented?	PSE Change	Intermediate
5. What was the impact of policy, system, or environmental changes on social and economic resources?	Impact on Health	Long-term

Next Steps & Lessons Learned

EVALUATION QUESTIONS 1-5

Next Steps

- Cross-Site Evaluation
 - Onboarding 5 new grantees
 - Refining Data Collection Questions / Approach
 - Evaluation Question 4: Communities identifying PSE changes
 - Evaluation Question 5: Impact on Health
- Cluster Evaluation
 - Examining Partnership Structure and Community Engagement

Policy Impact Assessment

Evaluation questions 4 & 5 (type of PSE adopted/implemented and impact of PSE on available resources and health outcomes)

Goal: To conduct a comprehensive evaluation of PSE changes to more accurately estimate the impact of these changes in HEAL behaviors.

Evaluation Questions	
What is the strength of the PSE change in terms of language, sustainability, and/or institutional commitment?	What PSE changes were adopted and implemented , and did it improve access to opportunities to healthier behaviors?
Does improving access to opportunities to engage in healthier behaviors improve health behaviors?	What are the intended and unintended consequences of the policy, environmental or system change?

Impact on Health: Example

Upstream Factor	Impact on Health	Pathways	HDGP Intervention	Reach	Impact on Health
Homelessness (22% of state population homeless or at risk)	Higher mortality rate; lifespan 42-52 years	Toxic stress, access to care, disease management	* Housing affordability * Housing stability	<i>Estimated (based on geographic reach of PSE change)</i>	<i>Estimated % change in health behavior and/or risk factor</i>
Economic Mobility (14% of Denver families living in poverty)	Increased risk of all chronic diseases	Toxic stress; access to care, disease management	* Anchor institution policies to support families and the neighborhood	<i>Estimated based on families impacted in neighborhood</i>	<i>Estimated % change in health behavior and/or risk factor</i>

Lessons Learned

- Balancing evaluation burden on grantees
- Semi-annual reporting but reporting is always open for reporting
- Contextual information is going to be critical
- There is not a standard or common method for evaluating how this work is done - developing new methodologies for this evaluation

Thank you!

Please contact Morgan Clennin with
additional questions/comments
(morgan.n.clennin@kp.org)



<https://www.pier-evaluation.org/>

Join us at our roundtable:

"Evaluating community engagement with a lens towards adaptive learning:
Lessons drawn from two multi-site, state-wide initiatives addressing health equity".
Friday, Nov 15th 5:45-6:30pm in Hilton Marquette III